

COMPANY PROFILE



HELPING HAND
TRANSPORT AND GENERAL CONTRACTING
SOLE PROPRIETORSHIP LLC

OUR COMPANY OFFERS A
COMPREHENSIVE RANGE OF
SERVICES, INCLUDING:

- 1- CIVIL ENGINEERING
- 2- ELECTRICAL ENGINEERING
- 3- LAND SURVEY AND MAPPING
- 4- GATE AND FENCE INSTALLATION
- 5- INFRASTRUCTURE WORKS
- 6- BUILDING WORKS

OUR FOCUS IS ON DELIVERY HIGH QUALITY
RESULTS WHILE MAINTAINING COST EFFECTIVENESS





HELPING HAND
TRANSPORT AND GENERAL CONTRACTING
SOLE PROPRIETORSHIP LLC

ABOUT US

Introducing to Helping Hand LLC, where innovation meets infrastructure excellence! Born from the visionary minds of seasoned Civil and Electromechanical Engineers, with over a decade of dedicated service in the dynamic landscape of the United Arab Emirates, our mission is crystal clear to deliver projects of unparalleled quality, all while keeping costs down and efficiency soaring. We didn't just dream it; we've built it, and today, Helping Hand stands as a testament to our unwavering commitment to comprehensive infrastructure development. From the solid foundations of civil engineering to the intricate intricacies of electromech systems and the future-forward realm of transportation, we are your one - stop solution for end-to-end excellence in the world of construction. Welcome to the future of infrastructure development; welcome to Helping Hand LLC.



OUR VISION, MISSION & MOTO

OUR VISION

To lead the future of infrastructure development, driven by unwavering excellence and customer satisfaction.

OUR MISSION

Striving to lead the evolution of infrastructure development by consistently delivering high-quality, cost-effective, and efficient projects across all construction domains, all while ensuring the utmost customer satisfaction.

OUR MOTO

Elevating Infrastructure with Innovation and Excellence.



OUR SERVICES



HELPING HAND
TRANSPORT AND GENERAL CONTRACTING
SOLE PROPRIETORSHIP LLC



CIVIL ENGINEERING

At HELPING HAND LLC, we recognize that the civil infrastructure and building industry form the very backbone of the UAE's thriving economy. Since our inception, we have ...



ELECTRICAL ENGINEERING

At HELPING HAND LLC, our Electrical Engineers and Supervisors are the guardians of power, fluent in the languages of Regulations and Supervision Bureau (RSB), ADDC, DEWA, and FEWA ...



LAND SURVEY & MAPPING

Helping Hand LLC recognizes the pivotal role of the civil infrastructure and building industry in the UAE economy. Therefore, from its inception, HH has been actively involved in civil construction ...



GATE & FENCE INSTALLATION

In today's ever-changing world, security has become a top priority. Whether it's safeguarding your property or protecting your loved ones, the need for reliable security solutions cannot be overstated ...



INFRASTRUCTURE WORKS

"Infrastructure works" is a commonly used term that refers to various construction or maintenance activities undertaken on roads and highways. These activities are conducted with the aim of enhancing ...



BUILDING WORKS

Whether you're envisioning a new architectural marvel, seeking to breathe new life into existing facilities, or looking to make strategic alterations and improvements, we are your trusted partner ...



MAINTENANCE WORKS

We take pride in our commitment to excellence, offering comprehensive maintenance solutions tailored to your specific needs. With our expertise, we keep your valuable assets in optimal working ...



TRANSPORTATION

At HH, we recognize the paramount importance of transportation in the construction industry. Our transportation services are meticulously designed to facilitate the seamless movement ...



MEP WORKS

HH has completed plumbing projects with all of these activities in all types of constructions, be it Road Infrastructure, High Rise Buildings, Malls, Factories, Schools, Hospitals, Villas etc ...



HELPING HAND
TRANSPORT AND GENERAL CONTRACTING
SOLE PROPRIETORSHIP LLC

OUR TEAM

GENERAL MANAGER

Sets Overall Program quality objectives, agrees New Platform quality costs and manages escalated quality issues. Championing the project and raising awareness at senior level. Approving strategies, implementation plan, project scope and milestones.

PLANNING MANAGER

Managing and leading the project team. Recruiting project staff and consultants. Managing coordination of the partners and working groups engaged in project work. Developing and maintaining a detailed project plan. Managing project deliverables in line with the project plan.

QA/QC MANAGER

The preparation of the companies QA manual control and supervision of all amendments and revisions. Control and the distribution of all the companies' quality documentation. Monitor all quality related activities on the project.

HSE MANAGER

Contribute to the design of engineering solutions and produce detailed designs and specifications. Project requirements including: Project HSE Plans, HSE Philosophies, Fire Fighting Layouts, Fire and Gas Detection Layouts and Safety Key Plans.

PROJECT MANAGER

Managing and leading the project team. Developing and maintaining a detailed project plan. Managing project deliverables in line with the project plan. Recording and managing project issues and escalating where necessary. Resolving cross-functional issues at project level.

CIVIL ENGINEER

Monitor all quality related activities on the project. Perform all internal and external audits on behalf of the company's management. Verify contractor quality requirements are specified to vendors and contractor documentation submittals.

ELECTRICAL MANAGER

Implement, maintain, & improve electrical instruments, components, facilities, equipment, products, and systems for commercial, industrial, and domestic purposes. Direct and coordinate construction, installation, maintenance.

I.T ENGINEER

Participate in IT projects such as system upgrades, migrations, and new installations. Collaborate with other teams or departments to implement IT solutions. Implement and Maintain security protocols and firewalls.

ISO CERTIFICATIONS



Quality Management System

Helping Hand, is a well-respected construction company that is involved in a full range of Buildings construction, Roads Infrastructure, MEP and Security Projects.



Environment Management System

Helping Hand, is a well-respected construction company that is involved in a full range of Buildings construction, Roads Infrastructure, MEP and Security Projects.



OH & S Management System

Helping Hand, is a well-respected construction company that is involved in a full range of Buildings construction, Roads Infrastructure, MEP and Security Projects.



Certificate of Registration

HELPING HAND TRANSPORT AND GENERAL CONTRACTING

PO BOX NO- 77682, OFFICE # 02, GAYATHI SANAYA PLOT: 49,
ABU DHABI - U.A.E.

has been assessed and Certified by Otabu Certification Pvt. Ltd.

as meeting the requirements of:

ISO 9001:2015

Quality Management System

For the following scope of activities:

- BUILDINGS MAINTENANCE
- ALL KIND BUILDING PROJECTS CONTRACTING
- TRANSPORT OF MATERIALS ASSEMBLY LIGHT TRUCKS
- TRANSPORT OF MATERIALS ASSEMBLY HEAVY TRUCK
- WASTE WATER TRANSPORTATION
- ONSHORE AND OFFSHORE OIL AND GAS FIELD ACTIVITY SERVICES

Date of Initial Registration: 30 March 2023
Date of this Certificate: 30 March 2023
Certificate Expiry: 29 March 2026

1st Surveillance Due: 29 March 2024
2nd Surveillance Due: 29 March 2025
Issue & Revision No: 01 & NA

Certificate No:- 0330Q160423

To Verify this Certificate please visit at www.otabucert.com



Dr. Anita Gupta
(Managing Director)

*Validity of the certificate is subject to successful completion of surveillance audit on or before due date (in case surveillance audit is not allowed to be conducted, this certificate shall be superseded/withdrawn). *This Certificate of Registration remains the Property of Otabu Certification Pvt. Ltd. and shall be returned immediately upon request.
Email:- info@otabucert.com website:- www.otabucert.com



Certificate of Registration

HELPING HAND TRANSPORT AND GENERAL CONTRACTING

PO BOX NO- 77682, OFFICE # 02, GAYATHI SANAYA PLOT: 49,
ABU DHABI - U.A.E.

has been assessed and Certified by Otabu Certification Pvt. Ltd.

as meeting the requirements of:

ISO 14001:2015

Environmental Management System

For the following scope of activities:

- BUILDINGS MAINTENANCE
- ALL KIND BUILDING PROJECTS CONTRACTING
- TRANSPORT OF MATERIALS ASSEMBLY LIGHT TRUCKS
- TRANSPORT OF MATERIALS ASSEMBLY HEAVY TRUCK
- WASTE WATER TRANSPORTATION
- ONSHORE AND OFFSHORE OIL AND GAS FIELD ACTIVITY SERVICES

Date of Initial Registration: 30 March 2023
Date of this Certificate: 30 March 2023
Certificate Expiry: 29 March 2026

1st Surveillance Due: 29 March 2024
2nd Surveillance Due: 29 March 2025
Issue & Revision No: 01 & NA

Certificate No:- 0330E160523

To Verify this Certificate please visit at www.otabucert.com



Dr. Anita Gupta
(Managing Director)

*Validity of the certificate is subject to successful completion of surveillance audit on or before due date (in case surveillance audit is not allowed to be conducted, this certificate shall be superseded/withdrawn). *This Certificate of Registration remains the Property of Otabu Certification Pvt. Ltd. and shall be returned immediately upon request.
Email:- info@otabucert.com website:- www.otabucert.com



Certificate of Registration

HELPING HAND TRANSPORT AND GENERAL CONTRACTING

PO BOX NO- 77682, OFFICE # 02, GAYATHI SANAYA PLOT: 49,
ABU DHABI - U.A.E.

has been assessed and Certified by Otabu Certification Pvt. Ltd.

as meeting the requirements of:

ISO 45001:2018

Occupational Health & Safety Management System

For the following scope of activities:

- BUILDINGS MAINTENANCE
- ALL KIND BUILDING PROJECTS CONTRACTING
- TRANSPORT OF MATERIALS ASSEMBLY LIGHT TRUCKS
- TRANSPORT OF MATERIALS ASSEMBLY HEAVY TRUCK
- WASTE WATER TRANSPORTATION
- ONSHORE AND OFFSHORE OIL AND GAS FIELD ACTIVITY SERVICES

Date of Initial Registration: 30 March 2023
Date of this Certificate: 30 March 2023
Certificate Expiry: 29 March 2026

1st Surveillance Due: 29 March 2024
2nd Surveillance Due: 29 March 2025
Issue & Revision No: 01 & NA

Certificate No:- 0330O160623

To Verify this Certificate please visit at www.otabucert.com



Dr. Anita Gupta
(Managing Director)

*Validity of the certificate is subject to successful completion of surveillance audit on or before due date (in case surveillance audit is not allowed to be conducted, this certificate shall be superseded/withdrawn). *This Certificate of Registration remains the Property of Otabu Certification Pvt. Ltd. and shall be returned immediately upon request.
Email:- info@otabucert.com website:- www.otabucert.com

ICV

CERTIFICATE



IN-COUNTRY VALUE CERTIFICATE

Certificate No.: 134270
Issue Date: 15.07.2024
Valid Until: 03.09.2025

HELPING HAND TRANSPORT AND GENERAL CONTRACTING - SOLE PROPRIETORSHIP L.L.C.

37.53%

Company General Information

License No.: CN-2707219
Company Type: SME in UAE
Financial Year End Date: 31.12.2023
Company Based In: Within UAE
Company Business: SERVICE PROVIDER



For Cases of Re-Certification

Re-Certification (*) No.:

برنامج المحتوى الوطني

Reason for this Re-Certification

Scan the QR code to verify status

Signed By
On behalf of Supplier

Name:
SAQIB RIAZ

Designation:
OWNER

Verified as per ICV Agreed Upon Procedures (AUP)
On behalf of Certification Body

Name:
Jaffer Rupawala

Designation:
Partner

Company:
Mazars Chartered Accountants - LLC

Certificate Issued Based on ICV Version: 3.0

Electronically signed by
Jaffer Rupawala

ENVIRONMENT POLICY



HH is a well-respected construction company that is involved in a full range of Buildings construction, Roads Infrastructure, MEP and Security Projects. We provide our Professional contracting services throughout the region of United Arab Emirates. It is the policy of HH to provide a service that exceeds our client's expectations. We do this, by attracting the most qualified employees and by seeking the most reputable and high-quality sub-contractors and products.

HH has adopted Environmental Management system that complies with the International Standard ISO 14001:2015.

HH has implemented an Environmental Management System (EMS) which forms part of the company's Integrated Management System. We maintain compliance with applicable environmental requirements and therefore are fully committed to following the ESTIDAMA regulations.

HH is a flag bearer of sustainable development and has environmental sustainability at the core of all its activities.

POLICY CLARIFICATION:

HH is committed to the following objectives:

- Conserving our natural and cultural environment and using natural resources efficiently.
- Working towards ecologically sustainable development with regard to raw materials used, energy sources usage and the environmental impact of our activities.
- Adopting a reduce, re-use and recycle approach
- Adopting the best available and affordable technologies
- Continuously improving our Integrated Management System which incorporates Quality, Occupational Safety and Health and Environmental Management Systems
- Complying with applicable legal and other environmental requirements required to appropriately manage our environmental aspects
- Ensuring that company employees and contractors are informed about this Policy and are aware of their responsibilities Professional, Reliable and Affordable Services

PROFESSIONAL, RELIABLE AND AFFORDABLE SERVICES

OHS (OCCUPATIONAL HEALTH AND SAFETY) **POLICY**



HH is a well-respected construction company that is involved in a full range of Buildings construction, Roads Infrastructure, MEP and Security Projects. We provide our Professional contracting services throughout the region of United Arab Emirates. It is the policy of HH to provide a service that exceeds our client's expectations. We do this by attracting the most qualified employees and by seeking the most reputable and high-quality sub-contractors and products.

HH has adopted Occupational Health & Safety Management system that complies with the International Standard OHSAS 18001:2007

As part of HH OH & S policy, HH has:

- Provided and implemented safe systems of work.
- Provided and maintained safe places of work, free from risks to health.
- Provided and maintained safe working equipment.
- Provided information, instructions, trainings and supervision to all its personal.
- Ensured that all employees are competent to do their work
- Consulted with its employees on matters affecting their health and safety.
- Encouraged the participation of all employees in improving health and safety standards.
- Strived to continuously improve health and safety management and performance.
- Provided and maintained sufficient resources for the management of health and safety.
- Implemented a system of monitoring, reviewing and reporting on health and safety performance issues.
- The HH five rules at work are as follows:
 - I assess and control risks before starting any task.
 - I only perform activities for which I am authorized.
 - I never override or misuse health and safety devices and I always use the required PPE.
 - I report all incidents.

PROFESSIONAL, RELIABLE AND AFFORDABLE SERVICES

QUALITY POLICY



HH is a well-respected construction company that is involved in a full range of Buildings construction, Roads Infrastructure, MEP and Security Projects. We provide our Professional contracting services throughout the region of United Arab Emirates. It is the policy of HH to provide a service that exceeds our client's expectations. We do this, by attracting the most qualified employees and by seeking the most reputable, high quality sub-contractors and products.

To ensure that these objectives are met, HH has adopted a quality management system that complies with the International Standard BS EN ISO 9001:2015. This Quality System will provide clients with the assurance that the projects completed by HHT&GC will be of a consistently high standard.

The Management of HH is totally committed to the implementation and maintenance of this quality management system and, in turn, expects every employee to contribute and support it. All employees of the company are aware of these quality objectives and strive to meet them.

The Quality Management System and Quality Policy will be continuously reviewed and updated as part of HH commitment to develop and continuously improve the processes and procedures of its business. This will be evident after reviewing the below quality objectives along with the HH Business Plan and strategic future Plan of the company.

- Use quality products from reputable suppliers.
- Engage competent and resourced sub-contractors.
- Ensure that the company resources are managed as one cohesive process.
- Perform all activities according to project plans and timetable.
- Enhance the skills of our employees through conducting suitable training and awareness programs
- Recognize staff as our most valuable asset and ensure that their endeavors and efforts receive due attention and recognition of the management.
- Comply with all the requirements of the government regulations of UAE.
- Create and maintain a safe working environment for all staff, sub-contractors and visitors.

PROFESSIONAL, RELIABLE AND AFFORDABLE SERVICES

IBM (INTEGRATED BUSINESS MANAGEMENT) **POLICY**



HH is a well-respected construction company that is involved in a full range of Buildings construction, Roads Infrastructure, MEP and Security Projects. We provide our Professional contracting services throughout the region of United Arab Emirates. It is the policy of HH to provide a service that exceeds our client's expectations. We do this, by attracting the most qualified employees and by seeking the most reputable and high-quality sub-contractors and products.

HH believes that it is important in business today to keep a creditable reputation, to be competitive and to maintain a sustainably profitable business. It is inevitable for the success of the company that all stakeholders put their support behind our business activities as well our management to achieve our goals. Thus, it has been decided to model our business systems on pas 99:2006 (Specification of Common Management System Requirements as a framework for Integration).

OUR MAIN OBJECTIVES ARE:

- Make sure that all stakeholders of HH are proficient with the new integrated system
- Consult all employees about quality, Health, Safety and Environment, work practices and the use of equipment.
- Allocate enough resources required to effectively implement all Quality and HSE issues.
- Ensure Continuous review and monitoring through internal auditing to government and third party compliance.
- Ensure 0 injuries on all HH sites.
- Minimize the negative aspects of work activities and their impact on Quality and HSE.
- Adopt and employee-oriented culture in the company that focuses on quality, improvement and outstanding performance.
- Unify the concepts of employee personal development as well as organizational development as both are necessary for the growth of the company.
- Copy best practices through all work activities carried out by HH staff.

OUR MANAGEMENT SYSTEM:

- Will focus on continuous improvement in all our activities.
- Will identify threats to Sustainability with the help of Risk Management Philosophies.
- Will be documented, maintained and implemented so that consistent level of service is realized.
- Will be managed and monitored by our senior management but will recognize the efforts of staff in achieving our objectives.
- Will integrate the concepts of the core management system standards into a cohesive and functional Business Management System.
- Will substantiate the conformance to standards by auditable evidence.

EQUAL OPPORTUNITY POLICY



HH is a well-respected construction company that is involved in a full range of Buildings construction, Roads Infrastructure, MEP and Security Projects. We provide our Professional contracting services throughout the region of United Arab Emirates. It is the policy of HH to provide a service that exceeds our client's expectations. We do this, by attracting the most qualified employees and by seeking the most reputable and high-quality sub-contractors and products.

HH is an equal opportunity employer and doesn't discriminate against employees and job Applicants on the basis of gender, age, race, nationality etc.

HH has implemented an Equal Opportunity Policy which forms part of the company's Integrated Management System. The diversity of HH employees is its core strength bringing together a variety of skills, minds and experiences and putting it to serve the objectives of the company.

HH hires, promotes and assign duties to its employees purely on merit and it doesn't discriminate people based on:

Gender: HH believes that Development not engendered is development endangered and offers equal opportunities of employment and professional growth to all genders without any discrimination.

Age: HH takes employment decisions based on merit and engages the right people for the right job. There is no specific policy screening out the candidates of any particular age group. In this regard, the company follows the laws of the country where it has its operations.

Disability: HH doesn't have any policy of barring potential employees based on any disability. However, it follows the laws of the countries where it keeps its operations.

Religion, Race or Nationality: HH believes in merit above all and hires people of all nationalities and religions without discrimination. This policy is not only adopted for employees but for all business relations including subcontractors and suppliers. The variety of people working with HH is its core strength.

PROFESSIONAL, RELIABLE AND AFFORDABLE SERVICES

OUR PROJECTS



SR.N	PROJECT DETAIL	CLIENT	PROJECT NAME
1	Installation of High-Density Polythene sheet for Ponds/Lagoon and Maintenance of Salt Ponds/Lagoon	AL Jaber Salt Factory LLC	Al-Ruwais
2	Manual Excavation & Installation of Manholes and Pipes networking	ASGC & Ontak General Contracting	Egypt Embassy, Abu Dhabi, U.A.E
3	RDC Fence Repair	MICCO Logistic	Al-Ruwais
4	Existing Parking Shed & RDC Fence Installation	MICCO Logistic	Al-Ruwais
5	Dismantling, Relocating semi Mobile tower complete including crane services, transportation from main road to near guard post.	Al Makamin Commercial Projects L.L.C	Al-Ruwais
6	Supply & installation of scaffolding works for LV Rooms and Fire Rooms for both check points, Ruwais	Etimad Strategic Security Solution – Sole Proprietorship LLC	Al-Ruwais
7	Supply & installation of Galvanized stairs with Guard Rail for both checkpoints, Glass Door, Key locks, Window blinds and Glass partitions.	Etimad Strategic Security Solution – Sole Proprietorship LLC	Al-Ruwais
8	Removing of Damaged Pyramid concertina from site & shifted to Etimad Office. Installing and clipping new pyramid concertina as per LPO	Etimad Strategic Security Solution – Sole Proprietorship LLC (Maintenance Dept.)	Al-Ruwais
9	Installation of AC, Doors & Frame In LV Room, Light Fixture and Internal Wiring, Stair Cast, water proofing, Traffic Signboards, Foundations of Signboards, VAB Installation , Canopy Installation And Many More.	Etimad Strategic Security Solution – Sole Proprietorship LLC	Al-Ruwais
10	Siren and Strobe Additional Six Numbers with Flash light for both checkpoints	Etimad Strategic Security Solution – Sole Proprietorship LLC	Al-Ruwais

OUR PROJECTS



11	Additional Works at Ruwais Checkpoints (Ghayathi & Old E-11)	Etimad Strategic Security Solution – Sole Proprietorship LLC	Al-Ruwais
12	Supply & Installation of Furniture, 3 phase isolators Laying of Power Cable, Earthing Pits, Pull Boxes, Scanner Machines, Testing and Commissioning.	Etimad Strategic Security Solution – Sole Proprietorship LLC	Al-Ruwais
13	Maintenance work	Etimad Strategic Security Solution – Sole Proprietorship LLC	Al-Ruwais
14	Testing of Exiting RMU, Dis-Connecting & Shifting of RMU. Installation, Glanding, Termination, Testing Commissioning.	Etimad Strategic Security Solution – Sole Proprietorship LLC	FUJIRA
15	Testing and Commissioning for Fire Alarm System	Etimad Strategic Security Solution – Sole Proprietorship LLC	BU-HASA
16	LV Team for Testing And Trouble shooting of ATS Panel	Etimad Strategic Security Solution – Sole Proprietorship LLC	BU-HASA
17	Repairing & Maintenance of Spilt Unit AC, Clean the Evaporator and condenser coil and replace of mother boards	Etimad Strategic Security Solution – Sole Proprietorship LLC	Al-Ruwais
18	Manual Excavation & Identify the leak points and provide additional joint and Testing and Commissioning change of water valve at two location.	Etimad Strategic Security Solution – Sole Proprietorship LLC	Al-Ruwais
19	Cleaning of water tanks at Old E-11, Repair of AC, Rectification of VAB Sensor and installation of VAB sensor, Re-Installation of VAB push button.	Etimad Strategic Security Solution – Sole Proprietorship LLC	Al-Ruwais
20	Supply & Installation of Canopy shed at both checkpoints, Speed hump with Paint marking, Road Studs and signboards. Installation & configuration of IP Phones. Supply & install of PA-Speaker. Supply of direction stickers.	Etimad Strategic Security Solution – Sole Proprietorship LLC	Al-Ruwais

OUR PROJECTS



21	Civil and Infrastructure works for Shah Sensor Towers - Cut/Fill, Gatch Access Road, Tower Platform, and Dense Fence & Gates.	Etimad Strategic Security Solution – Sole Proprietorship LLC	SHAH
22	Supply and Installation of Non Return Spikes at Ghayathi & Old E-11 Checkpoints	Etimad Strategic Security Solution – Sole Proprietorship LLC	Al-Ruwais
23	Snag closing works - Al Ruwais Checkpoints	Etimad Strategic Security Solution – Sole Proprietorship LLC	Al-Ruwais
24	40m Three (3) New Sensor Tower Foundations	AlanDick Middle East / Al Bawardi AlanDick	SHAH
25	Supply & Installation of Permanent Signboards with foundation for all CICPA Checkpoints	Etimad Strategic Security Solution – Sole Proprietorship LLC	Al-Ruwais
26	Supply of Faac VAB- Piston-italy B680H. Supply & Installation of auto/Manual Change over release group, Flashing light integrated flashing Traffic Lights.	Etimad Strategic Security Solution – Sole Proprietorship LLC	Al-Ruwais
27	Maintenance of Roof Leakage and Replacement of Aluminum Sheet.	Etimad Strategic Security Solution – Sole Proprietorship LLC	Al-Ruwais
28	Relocation of VAB (stage - IV)	Etimad Strategic Security Solution – Sole Proprietorship LLC	Al-Ruwais
29	Re-Placing of Damaged Signboards	Etimad Strategic Security Solution – Sole Proprietorship LLC	Al-Ruwais

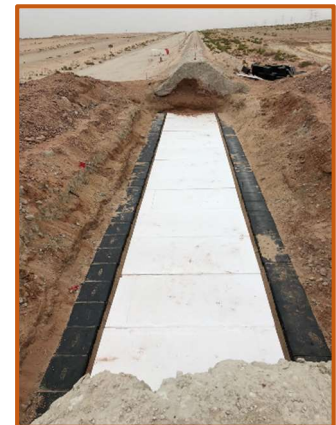
OUR PROJECTS SITE PICTURES



ASPHALT WORK



PIPE LINE WORK



TRAFFIC MANAGEMENT



OUR PROJECTS

SITE PICTURES



GATE INSTALLATION



FENCE INSTALLATION



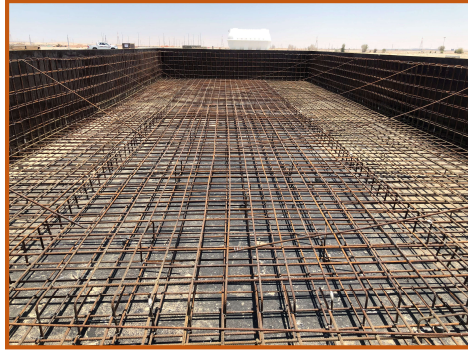
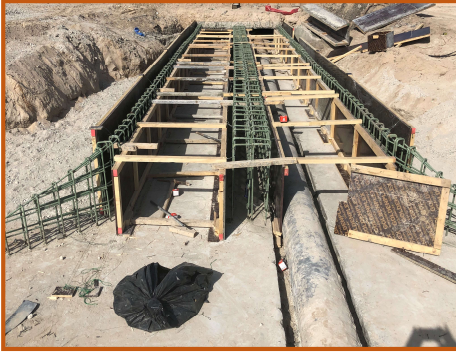
CONSTRUCTION WORK



OUR PROJECTS SITE PICTURES



STEEL FIXING AND SHUTTRING



INTERLOCK WORK



PGCC DUCTS WORK

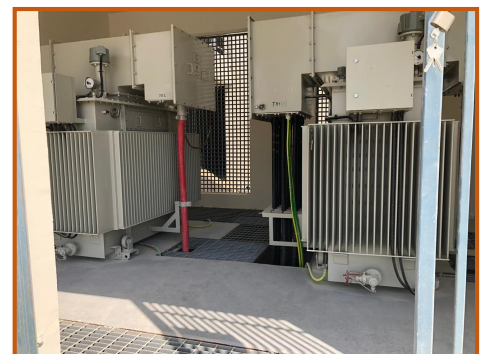
GENERATOR INSTALLATION



GATCH BERM FOR PIPE LINE



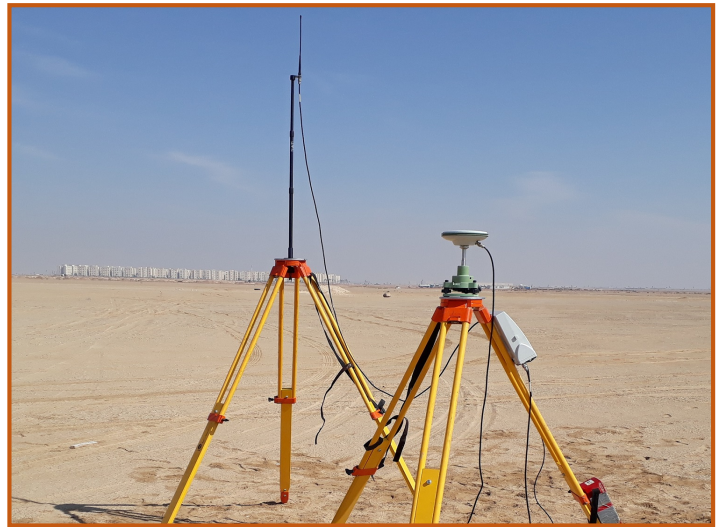
TRM INSTALLATION



OUR PROJECTS SITE PICTURES



LAND SURVEY AND MAPPING



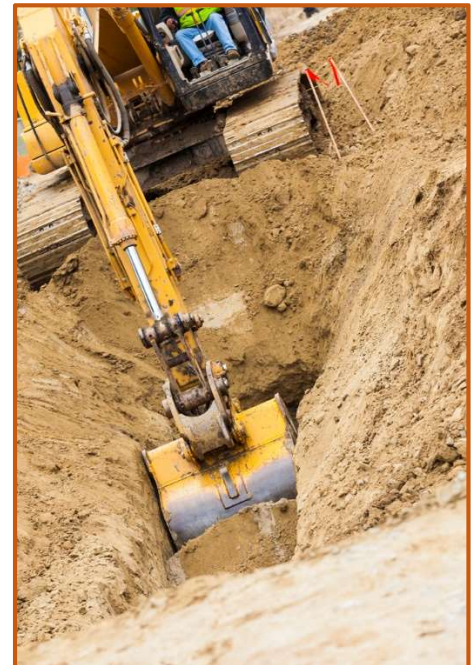
OUR PROJECTS SITE PICTURES



EARTH WORK (SHAH)



EXCAVATION WORK



OUR PROJECTS SITE PICTURES

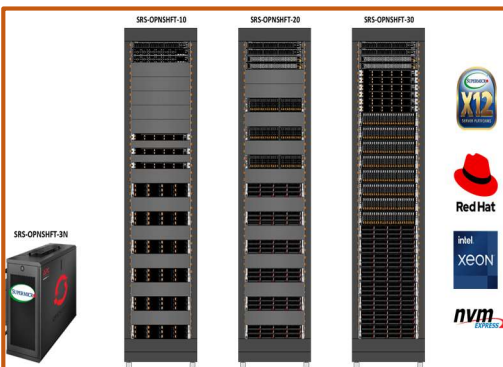
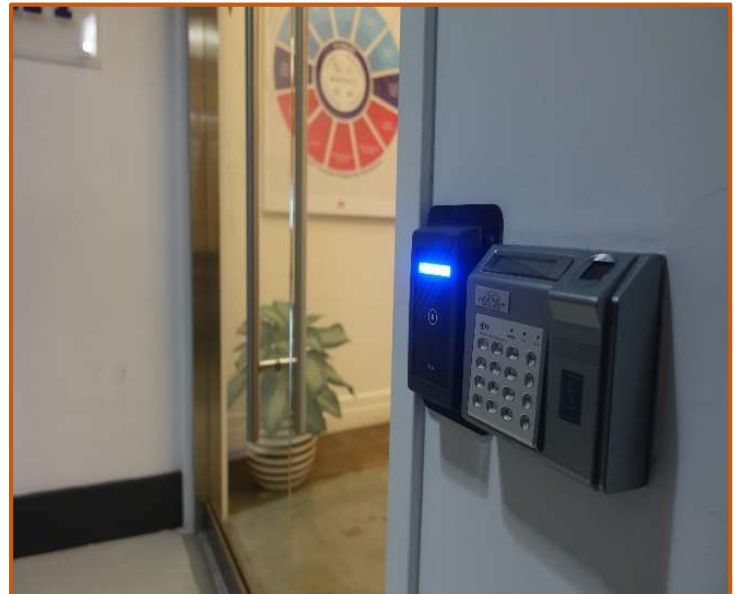


SAFETY & SECURITY

CCTV (AXIS, BOSCH, SAMSUNG, PANASONIC, HONEYWELL, MILESTONE SOFTWARE)



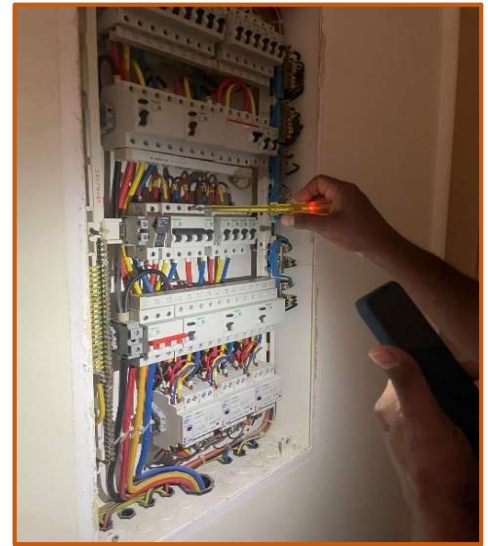
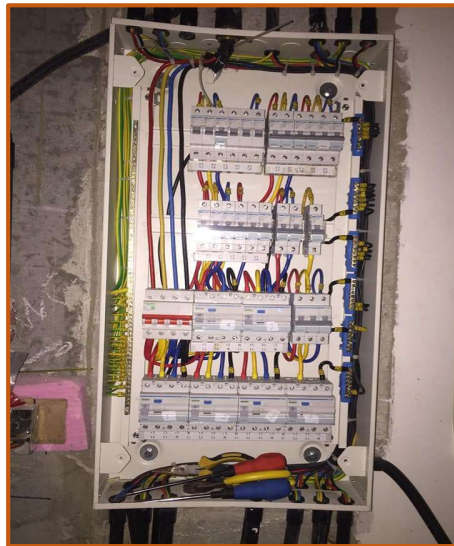
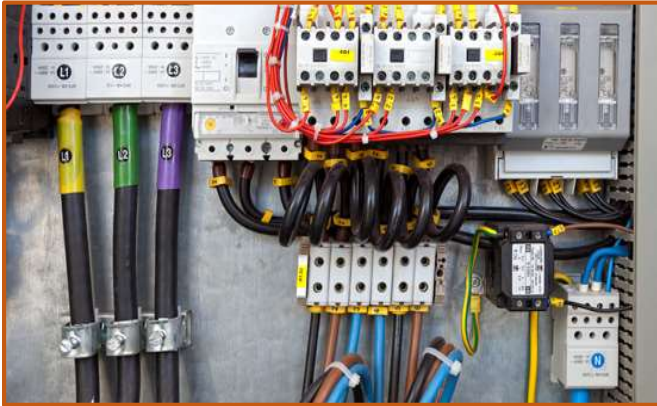
INFORMATION TECHNOLOGY (I.T) & ACCESS CONTROL



OUR PROJECTS SITE PICTURES



ELECTRICAL WORK



OUR CLIENTS



CONTACT US



(+971) 02 6280 835



WWW.HHTGC.COM



INFO@HHTGC.COM



**OFFICE #11, M FLOOR, GERMAN EXPERT
BUILDING, M4, MUSSAFFAH, ABU DHABI,
UNITED ARAB EMIRATES.**

